

E BODY DIMENSIONAL DIAGRAM

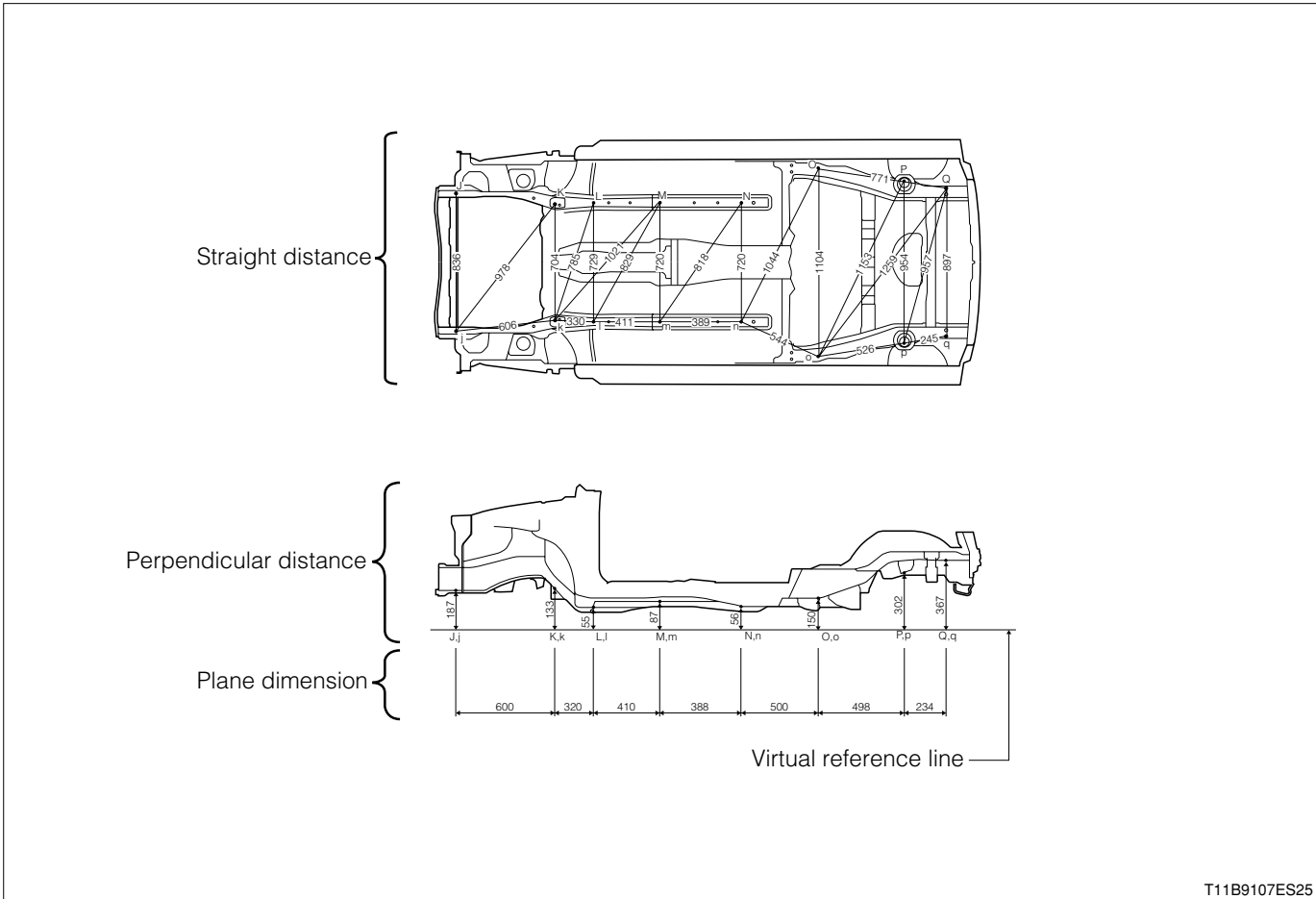
HOW TO READ DIMENSIONAL
DIAGRAM----- E - 1
INSTRUCTIONS ----- E - 1
HOW TO READ DIMENSIONAL
DIAGRAM----- E - 1
INSTRUCTIONS TO BE OBSERVED
DURING MEASURING OPERATION ----- E - 2
BODY DIMENSIONS ----- E - 3

1 HOW TO READ DIMENSIONAL DIAGRAM

1-1 INSTRUCTIONS

This body dimensional diagram is based on the measurement of the body dimensions by means of a tracking gauge for the body shell. (Condition where all pieces of equipment have been removed.)

1-2 HOW TO READ DIMENSIONAL DIAGRAM

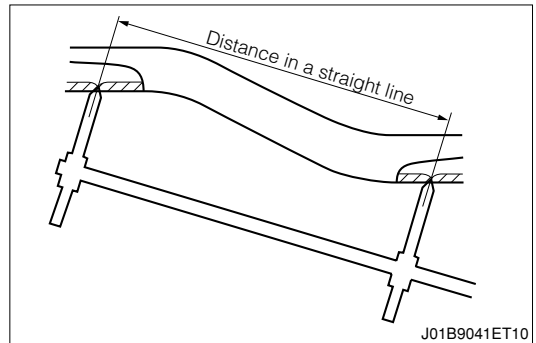


T11B9107ES25

1. Straight distance

Distance in a straight line

This indicates the distance in a straight line between the centers of the measuring points.

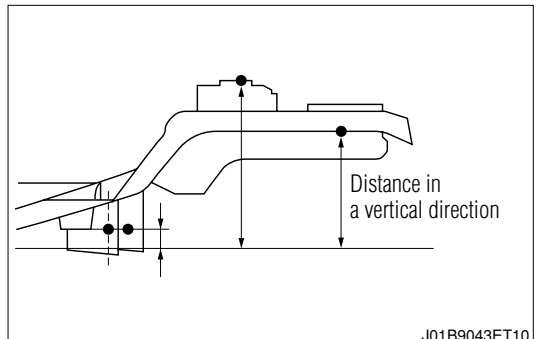


J01B9041ET10

2. Perpendicular distance

(1) Distance in a vertical direction

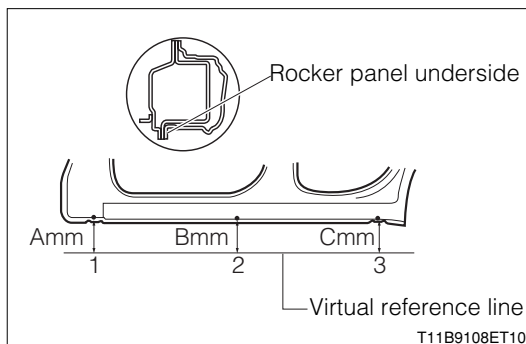
This indicates the distance in a vertical direction from the imagined line at the lower surface of the rocker panel or frame to the lower surface or center of the measuring point.



J01B9043ET10

- (2) The virtual reference line used during the height measurement shall be a line connecting the following points.

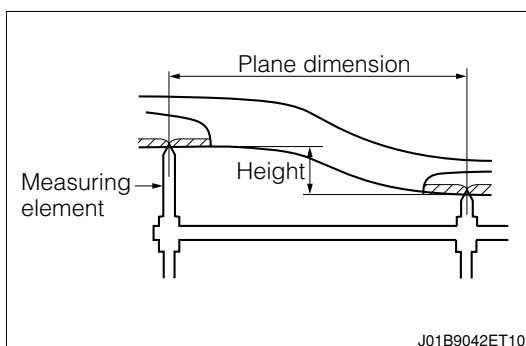
Code	Measuring point
1	Point A mm below the lower surface of the rocker panel at the center of the front jack up supporting section
2	Point B mm below the lower surface of the rocker panel at the center of points 1 and 3
3	Point C mm below the lower surface of the rocker panel at the center of the rear jack up supporting section



3.Plane dimension

Plane dimension

This indicates the dimension measured when the measuring points are projected on a plane.

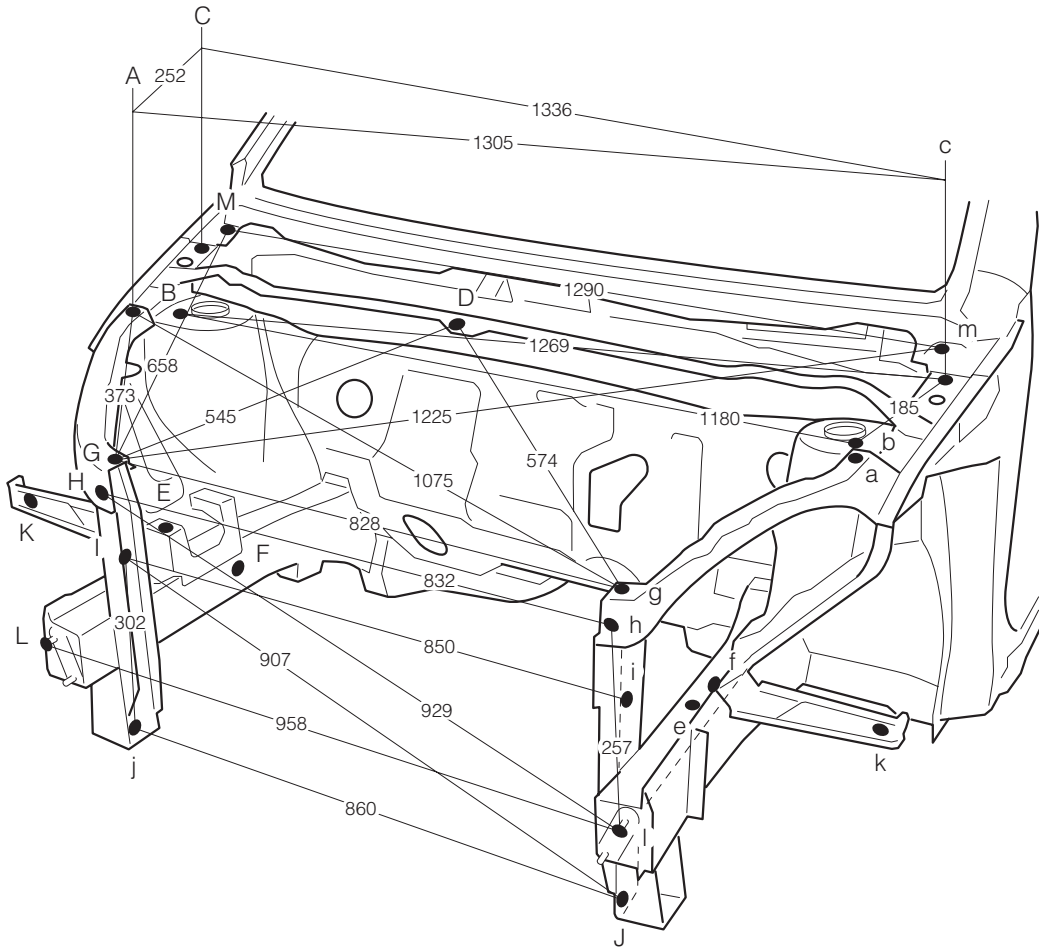


2 INSTRUCTIONS TO BE OBSERVED DURING MEASURING OPERATION

- 1.The basic measuring method of the body dimensions is one which uses a tracking gauge.
- 2.When performing the measurement by a tracking gauge, ensure that the gauge proper and pointer, etc. exhibit no excessive looseness.
- 3.When performing the measurement by a tape measure, ensure that it exhibits no deflection, twist, bend and so forth.
Especially, as for the red dimension line, it indicates the distance in a straight line. Hence, if a tape measure is interfered with the body during the measurement, use the tracking gauge to perform accurate measurements.
- 4.When the measuring points are covered with the undercoat, body sealer or the like, be sure to remove it completely and expose the measuring point. Then, proceed to the measurement.

3 BODY DIMENSIONS

SIRION Applicable type
M300RS, M301RS, M300LS, M301LS



A-a	A-D	a-D	B-D	b-D	B-E	b-e
1228	599	638	578	617	389	432
B-e	b-E	B-F	b-f	B-f	b-F	C-M,c-m
1122	1110	448	439	1095	1100	64
C-m,c-M	D-E	D-e	D-F	D-f	K-k	
1315	599	635	637	633	1472	

[Height above the virtual reference line]

A, a	M, m	G, g
814	867	704

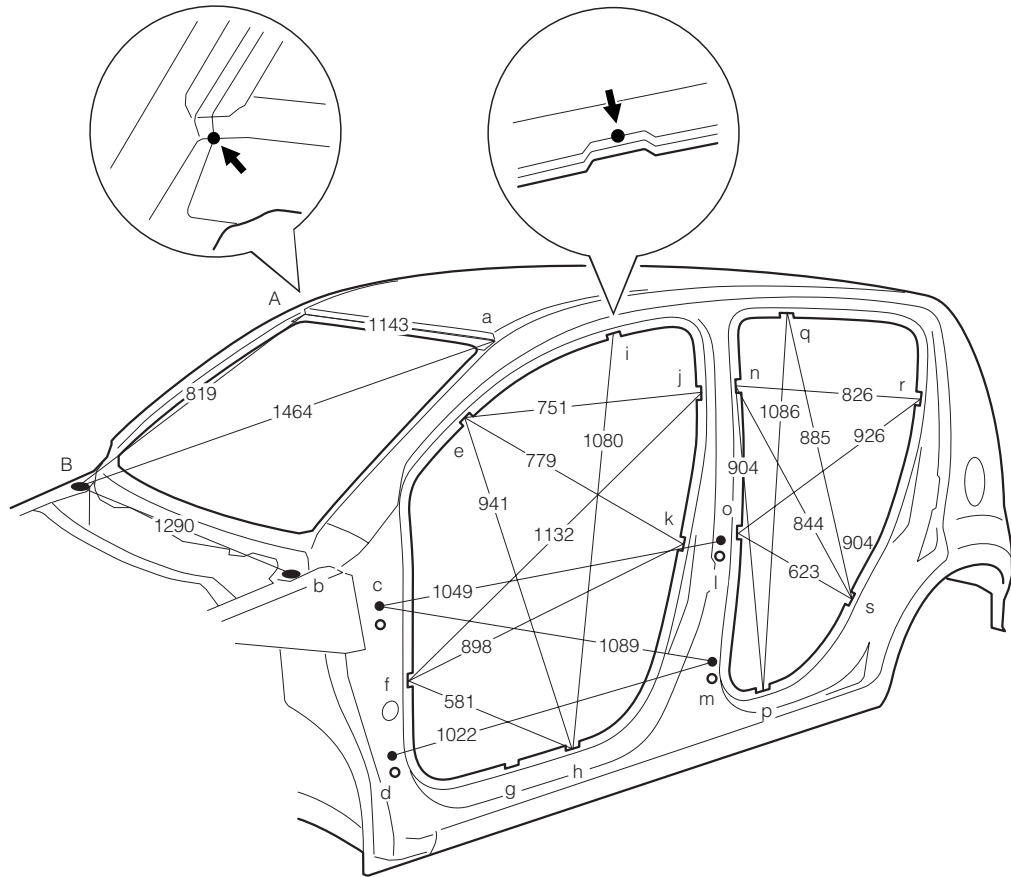
[Reference dimensions]

(Note) Symmetrical if dimensions are shown on either side only.

Unit: mm

Point codes	Nomenclature	Bore	Point codes	Nomenclature	Bore
A, a	Front fender attaching nut	6mm dia screw	H, h	Radiator support upper center attaching nut	6mm dia screw
B, b	Front spring support hole	8.5mm dia	I, i	Radiator support reference hole	10mm dia
C, c	Hood hinge attaching nut	6mm dia screw	J, j	Stabilizer bracket attaching hole	RH: 9.5mm dia LH: 11 x 9.5
D	Cowl top ventilator louver attaching hole	5.2mm dia	K, k	Front fender mounting bracket reference hole	10mm dia
E, e	Engine mounting attaching nut, front	10mm dia screw	L, l	Front bumper reinforcement attaching bolt	10 mm dia bolt end
F, f	Front side member reference hole	10mm dia	M, m	Front fender attaching nut	6mm dia screw
G, g	Radiator support upper center attaching nut	6mm dia screw	-	-	-

SIRION Applicable type
 / M300RS, M301RS, M300LS, M301LS



[Width dimension]

E-e	F-f	G-g	H-h	I-i	J-j	K-k
1262	1359	1364	1364	1170	1288	1354
N-n	O-o	P-p	Q-q	R-r	S-s	
1287	1364	1364	1153	1289	1363	

[Diagonal dimensions]

E-e-F	E-h,e-H	E-j,e-J	F-j,f-J	F-k,f-K	G-n,g-N	H-i,h-I	G-p,g-P
1456	1615	1480	1742	1627	1777	1663	1635
I-q,i-Q	J-k,j-K	N-r,n-R	N-s,n-S	O-s,o-S	P-q,p-Q	R-s,r-S	
1331	1383	1530	1570	1499	1659	1480	

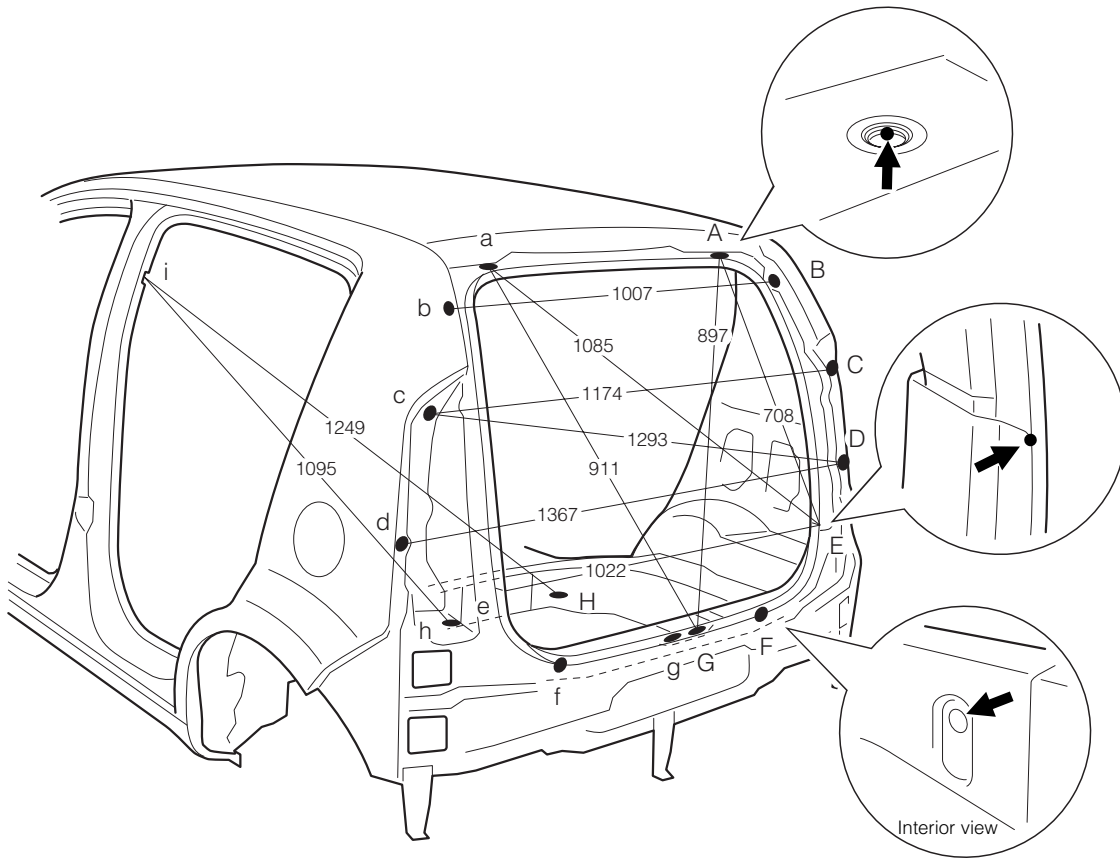
[Reference dimensions]

(Note) Symmetrical if dimensions are shown on either side only.

Unit: mm

Point codes	Nomenclature	Bore	Point codes	Nomenclature	Bore
A, a	Roof panel corner	-	K, k	Center body pillar mating mark	-
B, b	Front fender attaching nut	6mm dia screw	L, l	Rear door hinge attaching nut	8mm dia screw
C, c	Front door hinge attaching nut	8mm dia screw	M, m	Rear door hinge attaching nut	8mm dia screw
D, d	Front door hinge attaching nut	8mm dia screw	N, n	Center body pillar mating mark	-
E, e	Front body pillar mating mark	-	O, o	Center body pillar mating mark	-
F, f	Front body pillar mating mark	-	P, p	Rocker panel mating mark	-
G, g	Rocker panel mating mark	-	Q, q	Roof side rail mating mark	-
H, h	Rocker panel mating mark	-	R, r	Quarter panel mating mark	-
I, i	Roof side rail mating mark	-	S, s	Quarter panel mating mark	-
J, j	Center body pillar mating mark	-	-	-	-

SIRION Applicable type M300RS, M301RS, M300LS, M301LS



C-D, c-d	F-f	F-H, f-h	F-h, f-H
260	650	719	836
G-H, g-h	G-h, g-H	I-G, i-g	I-g, i-G
742	749	1584	1600

[Reference dimensions]

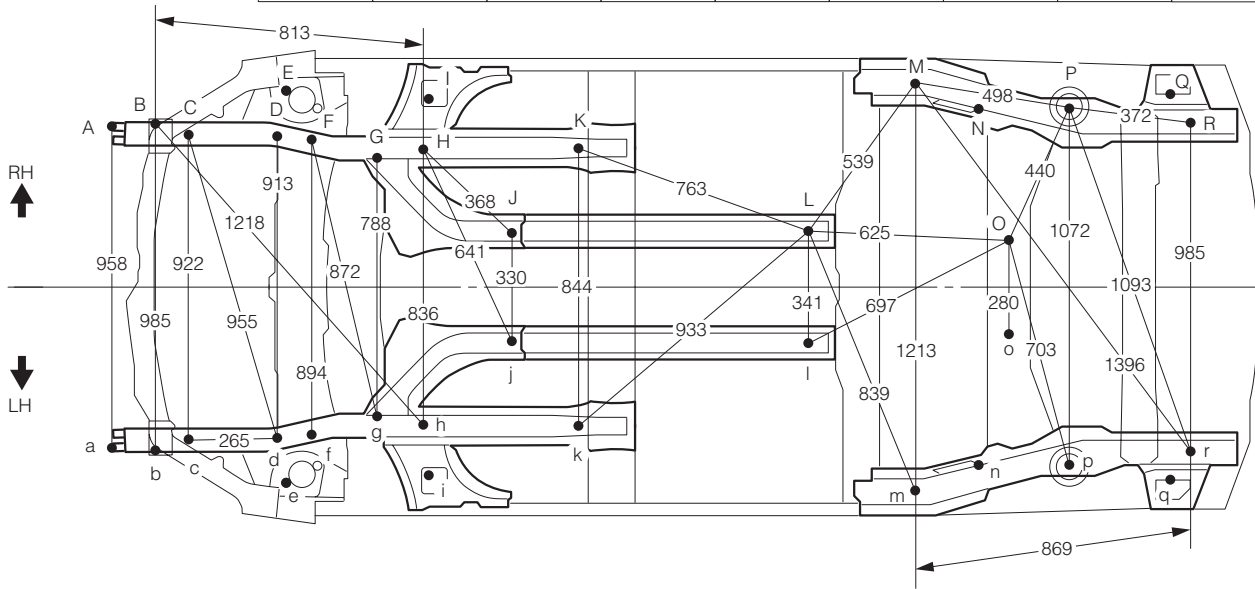
(Note) Symmetrical if dimensions are shown on either side only.

Unit: mm

Point codes	Nomenclature	Bore	Point codes	Nomenclature	Bore
A, a	Back door hinge attaching hole	RH: 8.1mm dia LH: 11x8.1	F, f	Quarter panel inner reference hole	12mm dia
B, b	Back door damper stay attaching nut	6mm dia screw	G, g	Back door lock striker attaching nut	6mm dia screw
C, c	Quarter panel extension outer reference hole	10mm dia	H, h	Rear seat attaching nut	8mm dia screw
D, d	Rear combination lamp attaching hole	8.5mm dia	I, i	Center body pillar mating mark	-
E, e	Roof side panel inner/quarter panel inner mating section	-	-	-	-

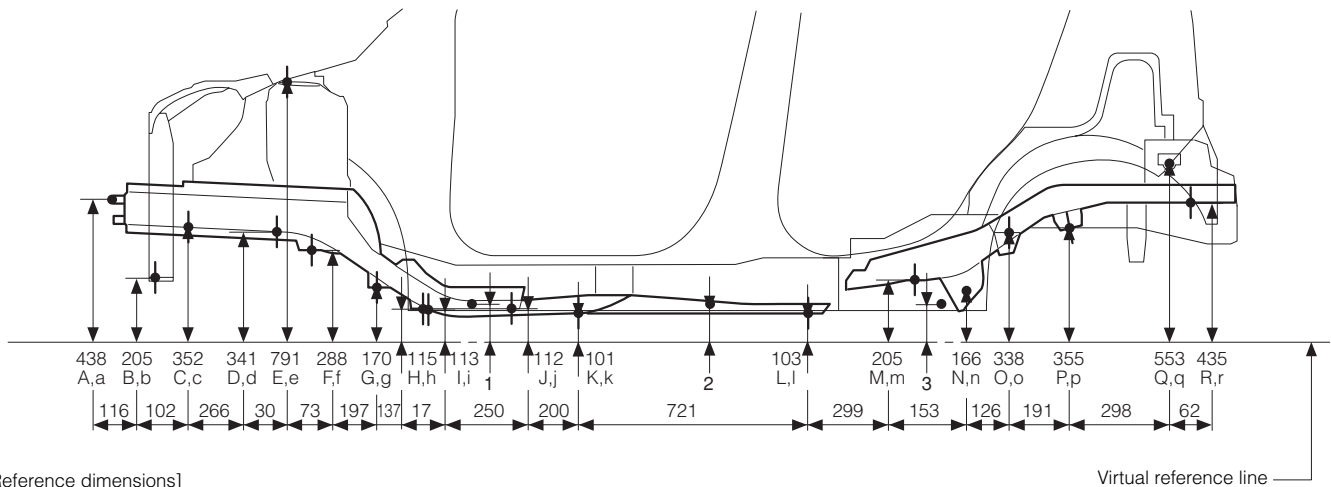
SIRION Applicable type
M300RS, M301RS, M300LS, M301LS

F-G,f-g	D-F,d-f	D-f,d-F	G-H,g-h	G-h,g-H	I-K,i-k	I-k,i-K	I-i	M-p,m-P
236	116	911	150	825	474	1090	1140	1244



Wheelbase	2440
-----------	------

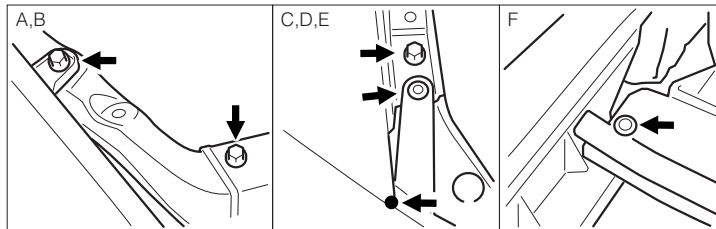
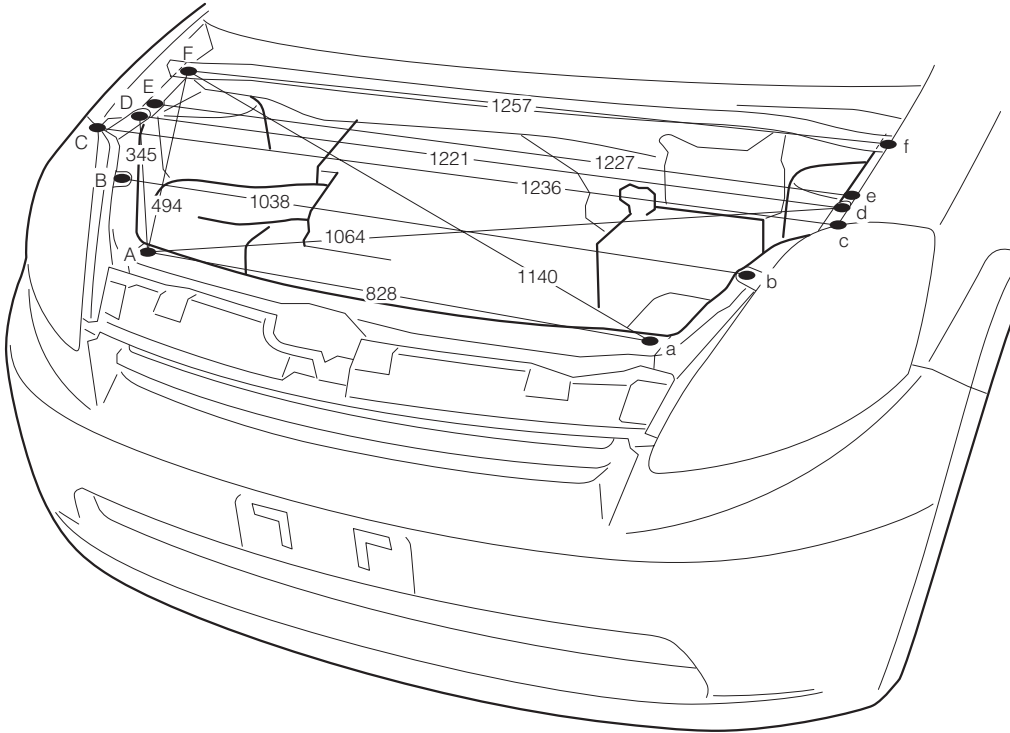
1	2	3
101	100	103



[Reference dimensions]
 (Note) Symmetrical if dimensions are shown on either side only.

Point codes	Nomenclature	Bore	Point codes	Nomenclature	Bore
A, a	Front bumper reinforcement attaching bolt	10mm dia bolt end	J, j	Front side member reference hole	10mm dia
B, b	Stabilizer attaching nut	6mm dia screw	K, k	Front side member reference hole	18mm dia
C, c	Front side member reference hole	15mm dia	L, l	Front floor under reinforcement reference hole	10mm dia
D, d	Front side member reference hole	15mm dia	M, m	Rear floor side member reference hole	15mm dia
E, e	Front shock absorber attaching nut	8.5mm dia	N, n	Trailing arm attaching hole, inner	12.5mm dia
F, f	Front suspension cross member attaching nut	12mm dia screw	O, o	Rear floor cross member reference hole	15mm dia
G, g	Front suspension cross member attaching nut	12mm dia screw	P, p	Bump stopper attaching nut	8mm dia screw
H, h	Front suspension cross member brace attaching nut	10mm dia screw	Q, q	Rear shock absorber attaching hole	14.5mm dia
I, i	Torque box reference hole	10mm dia	R, r	Rear floor side member reference hole	20mm dia

SIRION Applicable type / M300RS, M301RS, M300LS, M301LS



[Reference dimensions]

(Note) Symmetrical if dimensions are shown on either side only.

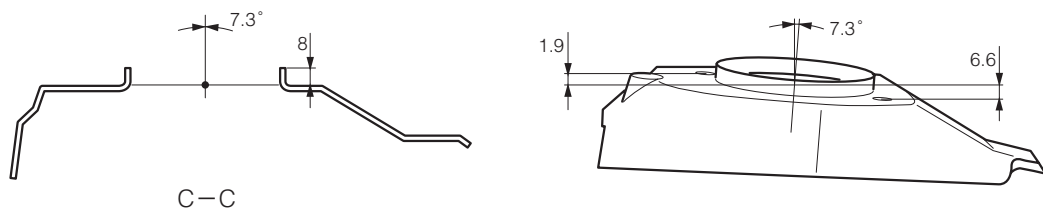
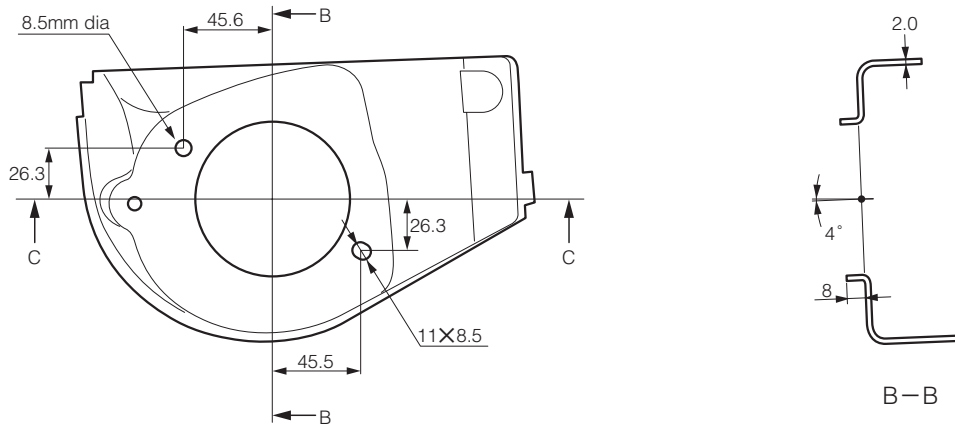
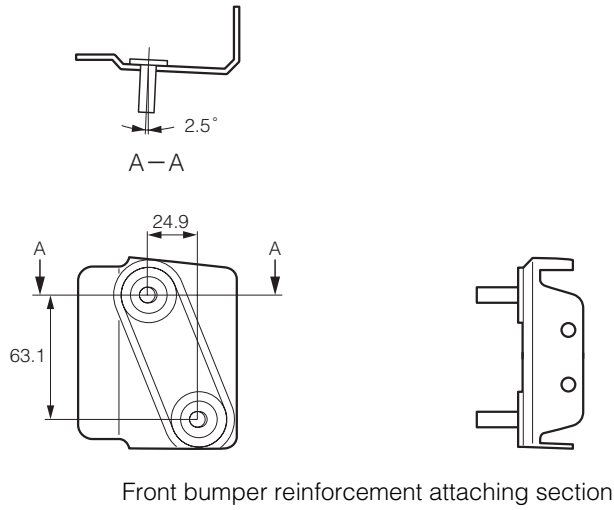
Unit: mm

Point codes	Nomenclature	Bore	Point codes	Nomenclature	Bore
A, a	Radiator support upper center attaching bolt head end	—	D, d	Headlight attaching clip end	—
B, b	Headlight attaching bolt head end	—	E, e	Front fender attaching bolt head end	—
C, c	Front fender corner end	—	F, f	Cowl top ventilator louver attaching clip end	—

SIRION Applicable type
M300RS, M301RS, M300LS, M301LS

Plane dimension

[Reference dimensions]



Front spring support attaching area

Unit: mm