

J6 OTHER ELECTRICAL PARTS

HORN SYSTEM -----	J6 - 1
BASIC CHECK AND ADJUSTMENT ---	J6 - 1
HORN-----	J6 - 1
REMOVAL AND INSTALLATION (STANDARD-BUMPER EQUIPPED VEHICLE)-----	J6 - 1
REMOVAL AND INSTALLATION (AERO-BUMPER EQUIPPED VEHICLE)-----	J6 - 2

J6-1

1 HORN SYSTEM

1-1 BASIC CHECK AND ADJUSTMENT

1-1-1 CHECK OF HORN OPERATION

1. Check that the horn sounds when the horn button is pushed, while the steering wheel is being turned.

SPECIFIED VALUE: The horn shall sound.

2. Check whether the volume level and quality of sound stay constant.

SPECIFIED VALUE: The quality of sound shall stay constant.

2 HORN

2-1 REMOVAL AND INSTALLATION (STANDARD-BUMPER EQUIPPED VEHICLE)

2-1-1 ARTICLES TO BE PREPARED

Instrument

Torque wrench

2-1-2 OPERATION BEFORE REMOVAL

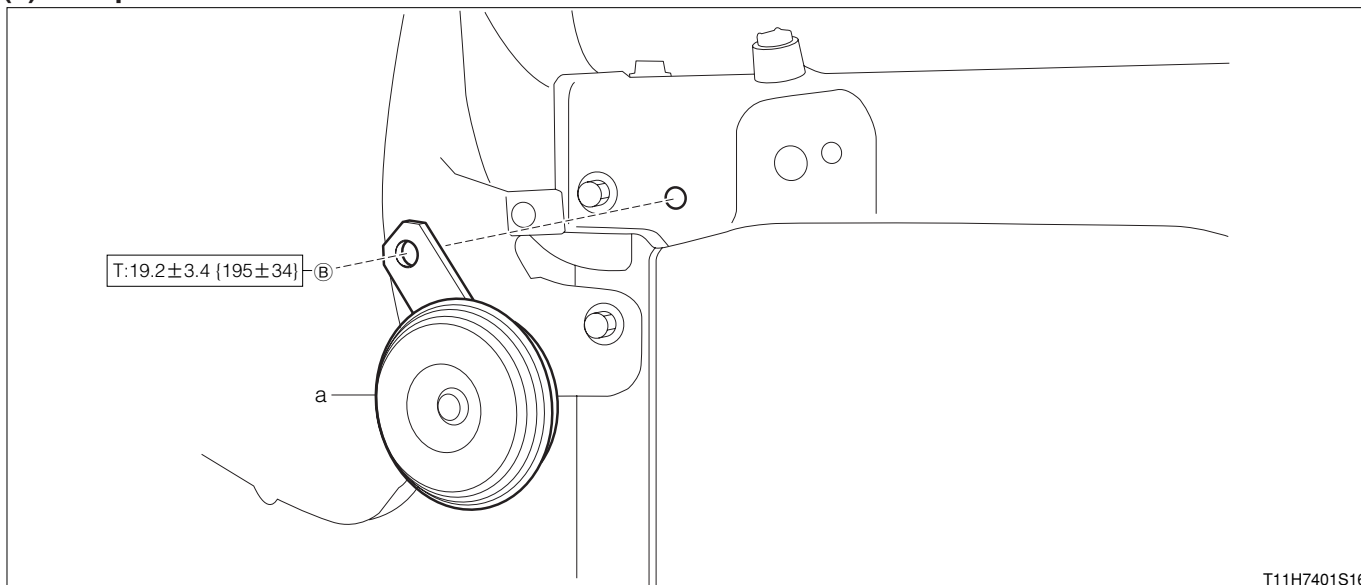
1. Remove the battery negative (−) terminal.

2. Remove the front bumper cover.

Refer to Page I2-2.

2-1-3 REMOVAL AND INSTALLATION PROCEDURES

(1) Components



Unit: N·m {kgf·cm}

(2) Removal and installation procedures

1 a Horn Ay, high-pitch

2-1-4 OPERATION AFTER INSTALLATION

1. Install the front bumper cover.

Refer to Page I2-2.

2. Install the battery negative (−) terminal.

2-2 REMOVAL AND INSTALLATION(AERO-BUMPER EQUIPPED VEHICLE)

2-2-1 ARTICLES TO BE PREPARED

Instrument

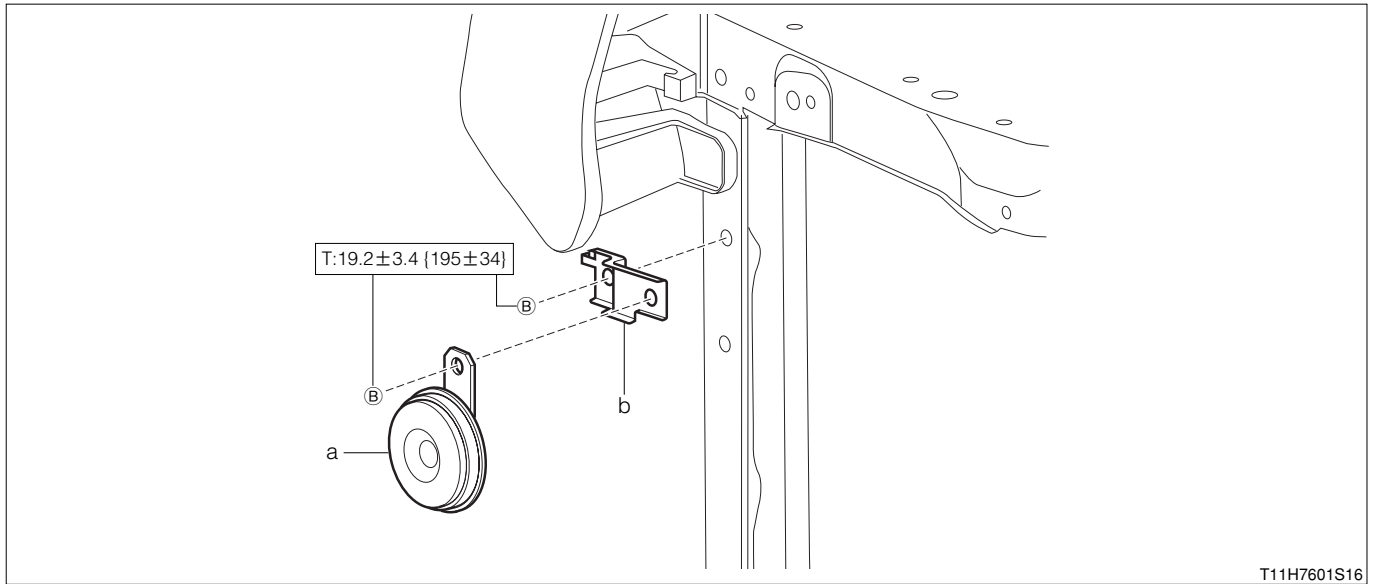
Torque wrench

2-2-2 OPERATION BEFORE REMOVAL

- 1.Remove the battery negative (－) terminal.
 - 2.Remove the front bumper cover.
- Refer to Page I2-4.

2-2-3 REMOVAL AND INSTALLATION PROCEDURES

(1) Components



T11H7601S16

Unit:N·m{kgf·cm}

(2) Removal and installation procedures

- 1 a Horn Ay,high-pitch
- 2 b Stay,horn

2-2-4 OPERATION AFTER INSTALLATION

- 1.Install the front bumper cover.
Refer to Page I2-4.
- 2.Install the battery negative (－) terminal.