

B4 EXHAUST SYSTEM

1KR ----- B4 - 1
EXHAUST MANIFOLD GASKET ----- B4 - 1
REMOVAL AND INSTALLATION----- B4 - 1
EXHAUST PIPE ----- B4 - 3
REMOVAL AND INSTALLATION----- B4 - 3
K3 ----- B4 - 4
EXHAUST MANIFOLD GASKET ----- B4 - 4
REMOVAL AND INSTALLATION----- B4 - 4
EXHAUST PIPE ----- B4 - 6
REMOVAL AND INSTALLATION----- B4 - 6

1KR 1 EXHAUST MANIFOLD GASKET

1-1 REMOVAL AND INSTALLATION

WARNING

- Do not carry out the operation while the exhaust manifold converter S/A is still hot.

1-1-1 ARTICLES TO BE PREPARED

Instrument

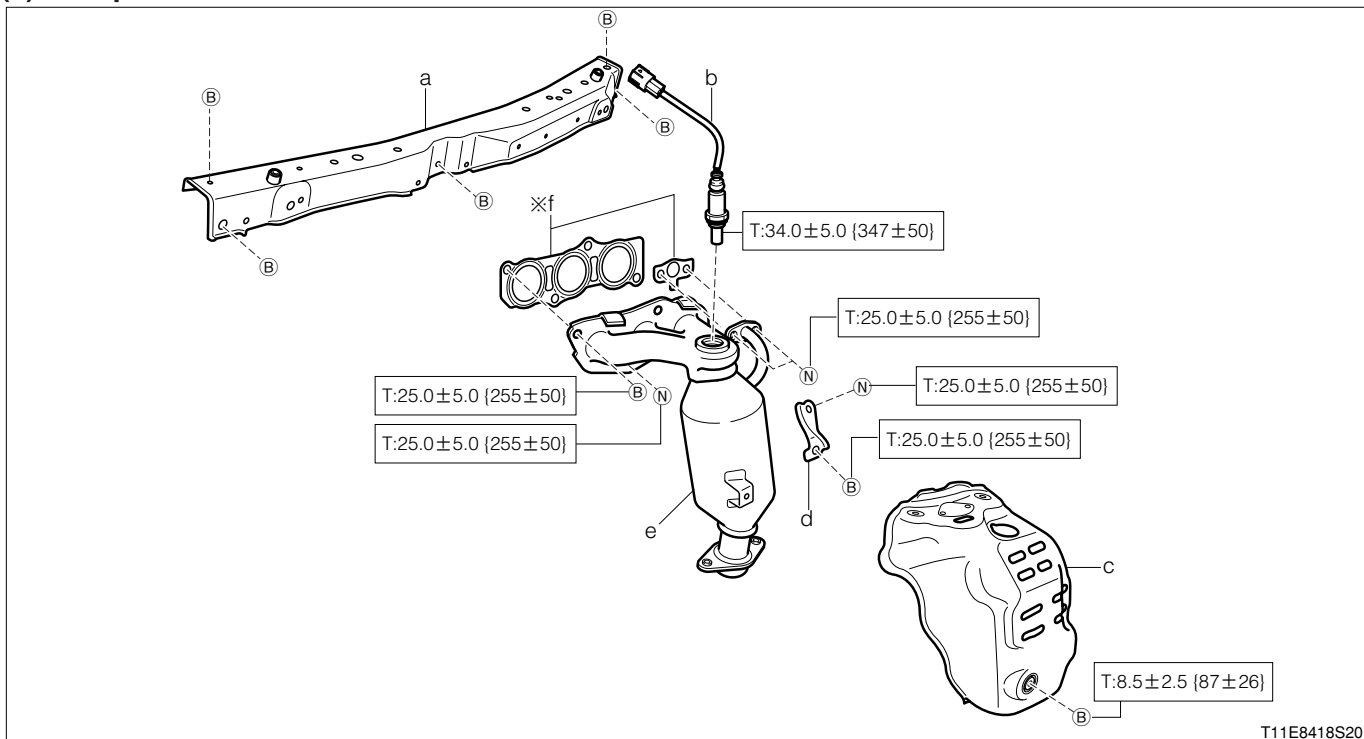
Torque wrench

1-1-2 OPERATION BEFORE REMOVAL

- Remove the front bumper cover.
Refer to Page I2-2.
- Remove the front exhaust pipe Ay.
Refer to Page B4-3.

1-1-3 REMOVAL AND INSTALLATION PROCEDURES

(1) Components



※:Non - reusable parts

Unit:N·m(kgf·cm)

(2) Removal and installation procedures

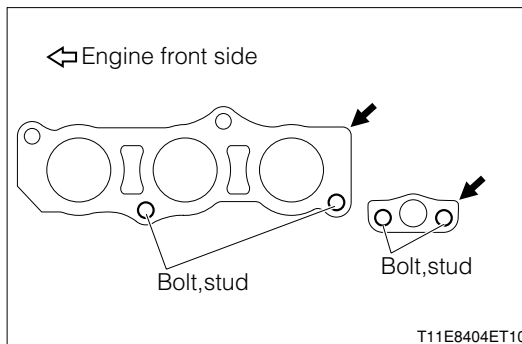
- | | |
|---------------------------------------|--|
| 1 a Radiator support upper | ▲ 6 f Gasket, exhaust manifold to head |
| 2 b Sensor, oxygen | |
| 3 c Insulator, exhaust manifold heat | |
| 4 d Stay, exhaust manifold | |
| ▲ 5 e Converter S/A, exhaust manifold | |

1-1-4 POINTS OF INSTALLATION

(1) Gasket, exhaust manifold to head

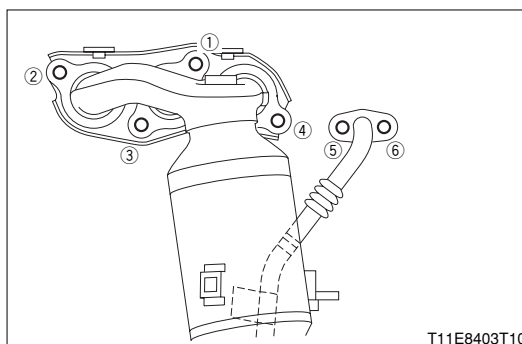
- Clean the gasket installation surfaces of the cylinder head and exhaust manifold converter S/A.

2. Perform the installation so that the arrow section will come to the right upper side facing towards the installation surface of the cylinder head Ay.



(2) Converter S/A, exhaust manifold

1. Tighten the attaching bolts and nuts of the converter S/A in the sequence shown in the right figure.



1-1-5 OPERATION AFTER INSTALLATION

1. Install the front exhaust pipe Ay.
Refer to Page B4-3.
2. Install the front bumper cover.
Refer to Page I2-2.

2 EXHAUST PIPE

2-1 REMOVAL AND INSTALLATION

WARNING

- Do not carry out the operation while the front exhaust pipe Ay is still hot.

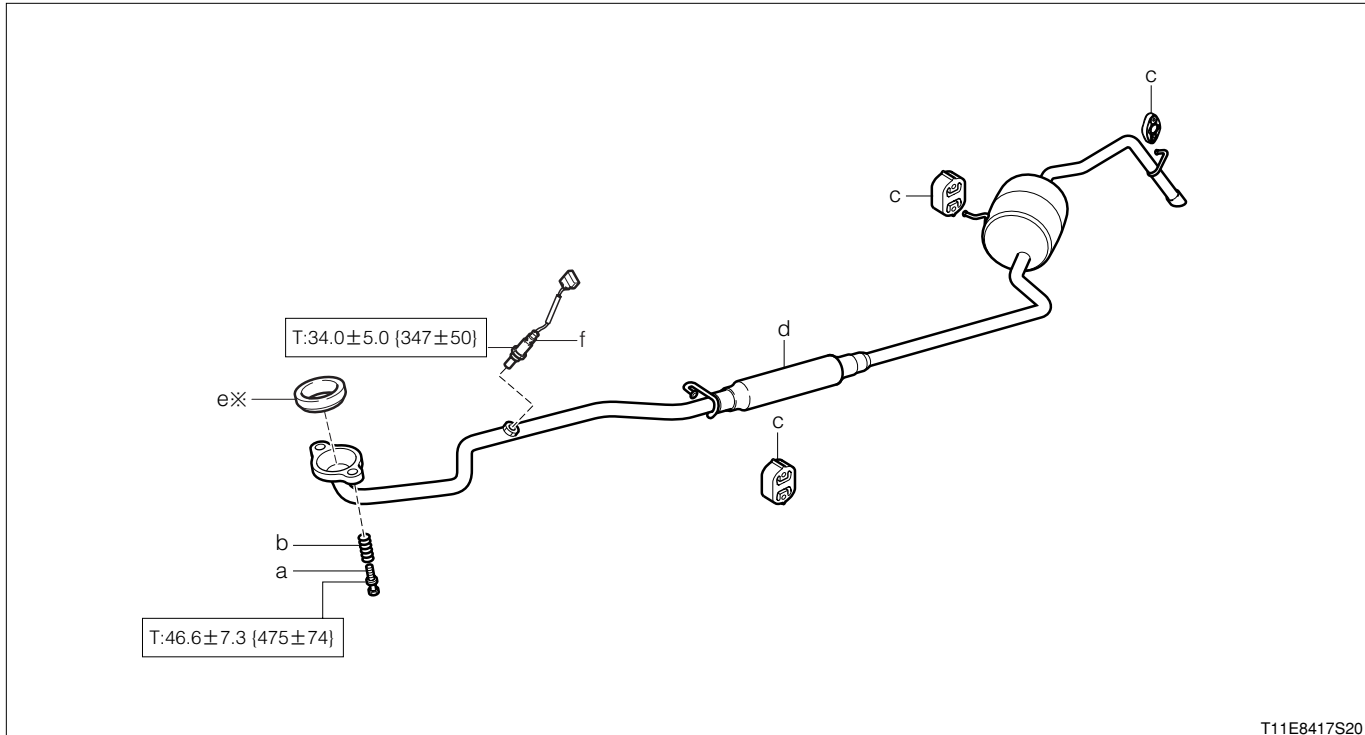
2-1-1 ARTICLES TO BE PREPARED

Instrument

Torque wrench

2-1-2 REMOVAL AND INSTALLATION PROCEDURES

(1) Components



T11E8417S20

※:Non - reusable parts

Unit:N·m{kgf·cm}

(2) Removal and installation procedures

- 1 a Bolt, exhaust pipe support
- 2 b Spring, exhaust manifold
- 3 c Support, muffler, No.2
- 4 d Pipe Ay, exhaust, front
- 5 e Gasket, exhaust pipe
- 6 f Sensor, oxygen

■ K3 1 EXHAUST MANIFOLD GASKET

1-1 REMOVAL AND INSTALLATION

WARNING

- Do not carry out the operation while the exhaust manifold Ay is still hot.

1-1-1 ARTICLES TO BE PREPARED

Instrument

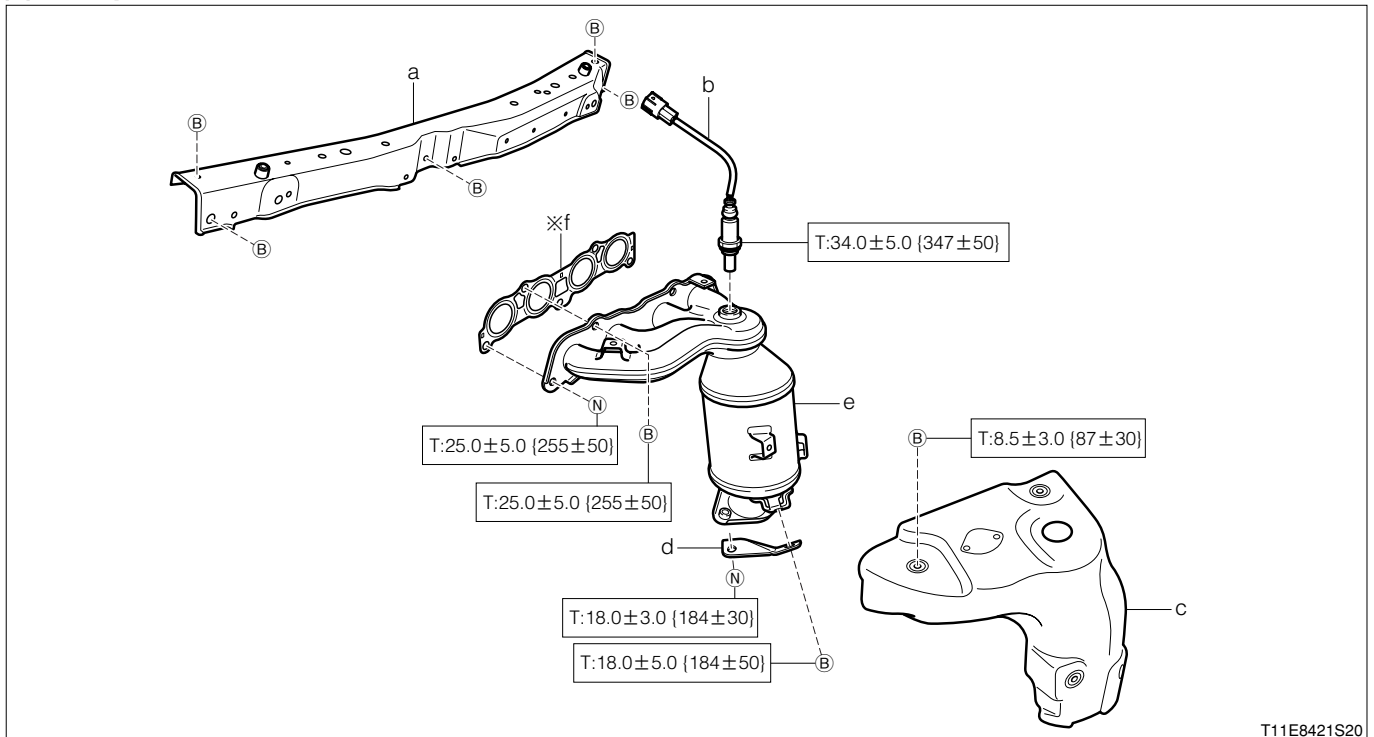
Torque wrench

1-1-2 OPERATION BEFORE REMOVAL

- 1.Remove the front bumper cover.
Refer to Page I2-2.
- 2.Remove the front exhaust pipe Ay.
Refer to Page B4-6.

1-1-3 REMOVAL AND INSTALLATION PROCEDURES

(1) Components



※:Non - reusable parts

Unit:N·m{kgf·cm}

(2) Removal and installation procedures

- | | |
|--------------------------------------|--|
| 1 a Radiator support upper | ▲ 6 f Gasket, exhaust manifold to head |
| 2 b Sensor, oxygen | |
| 3 c Insulator, exhaust manifold heat | |
| 4 d Stay, exhaust manifold | |
| ▲ 5 e Manifold Ay, exhaust | |

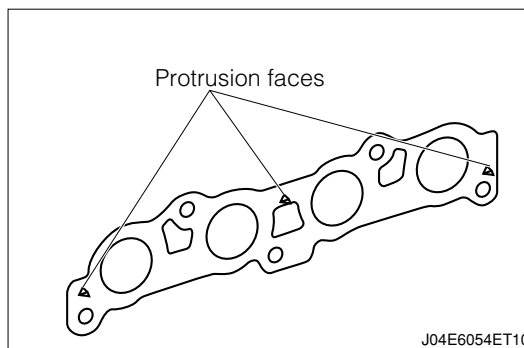
1-1-4 POINTS OF INSTALLATION

(1) Gasket, exhaust manifold to head

- 1.Clean the gasket installation surfaces of the cylinder head and exhaust manifold.

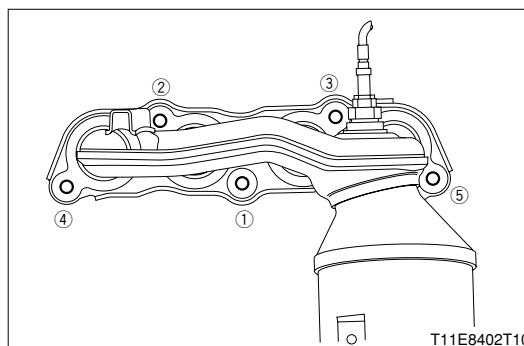
B4-5

2. Install the gasket in such a way that the protruding section will face the cylinder head Ay side.



(2) Manifold Ay, exhaust

1. Tighten the attaching bolts and nuts of the manifold Ay in the sequence shown in the right figure.



1-1-5 OPERATION AFTER INSTALLATION

1. Install the front exhaust pipe Ay.
Refer to Page B4-6.
2. Install the front bumper cover.
Refer to Page I2-2.

2 EXHAUST PIPE

2-1 REMOVAL AND INSTALLATION

WARNING

- Do not carry out the operation while the front exhaust pipe Ay is still hot.

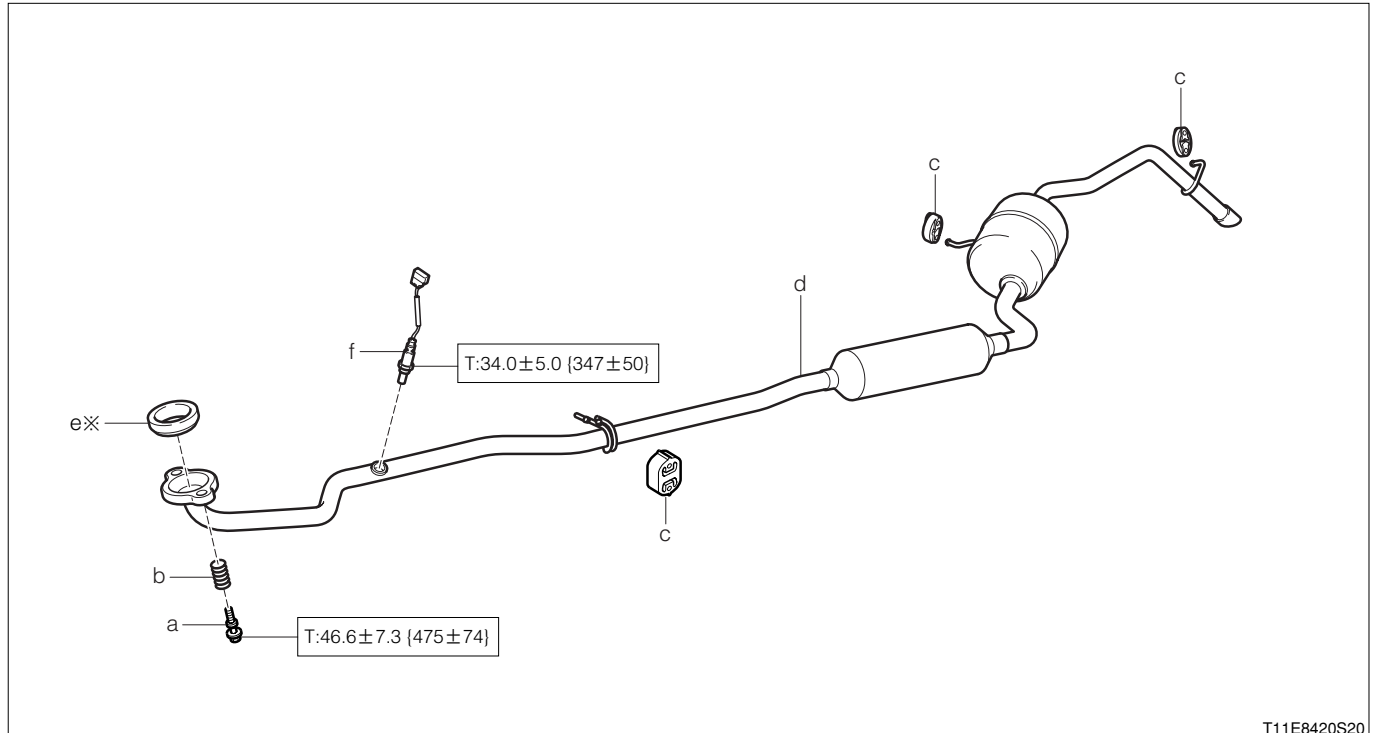
2-1-1 ARTICLES TO BE PREPARED

Instrument

Torque wrench

2-1-2 REMOVAL AND INSTALLATION PROCEDURES

(1) Components



※:Non - reusable parts

Unit:N·m{kgf·cm}

(2) Removal and installation procedures

- | | | | |
|---|------------------------------|---|------------------|
| 1 | a Bolt, exhaust pipe support | 6 | f Sensor, oxygen |
| 2 | b Spring, exhaust manifold | | |
| 3 | c Support, muffler, No.2 | | |
| 4 | d Pipe Ay, exhaust, front | | |
| 5 | e Gasket, exhaust pipe | | |